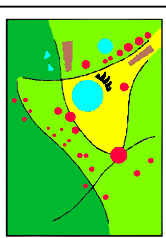


COMUNE  
DI  
CAVRIGLIA

PROVINCIA DI AREZZO

IL PIANO STRUTTURALE

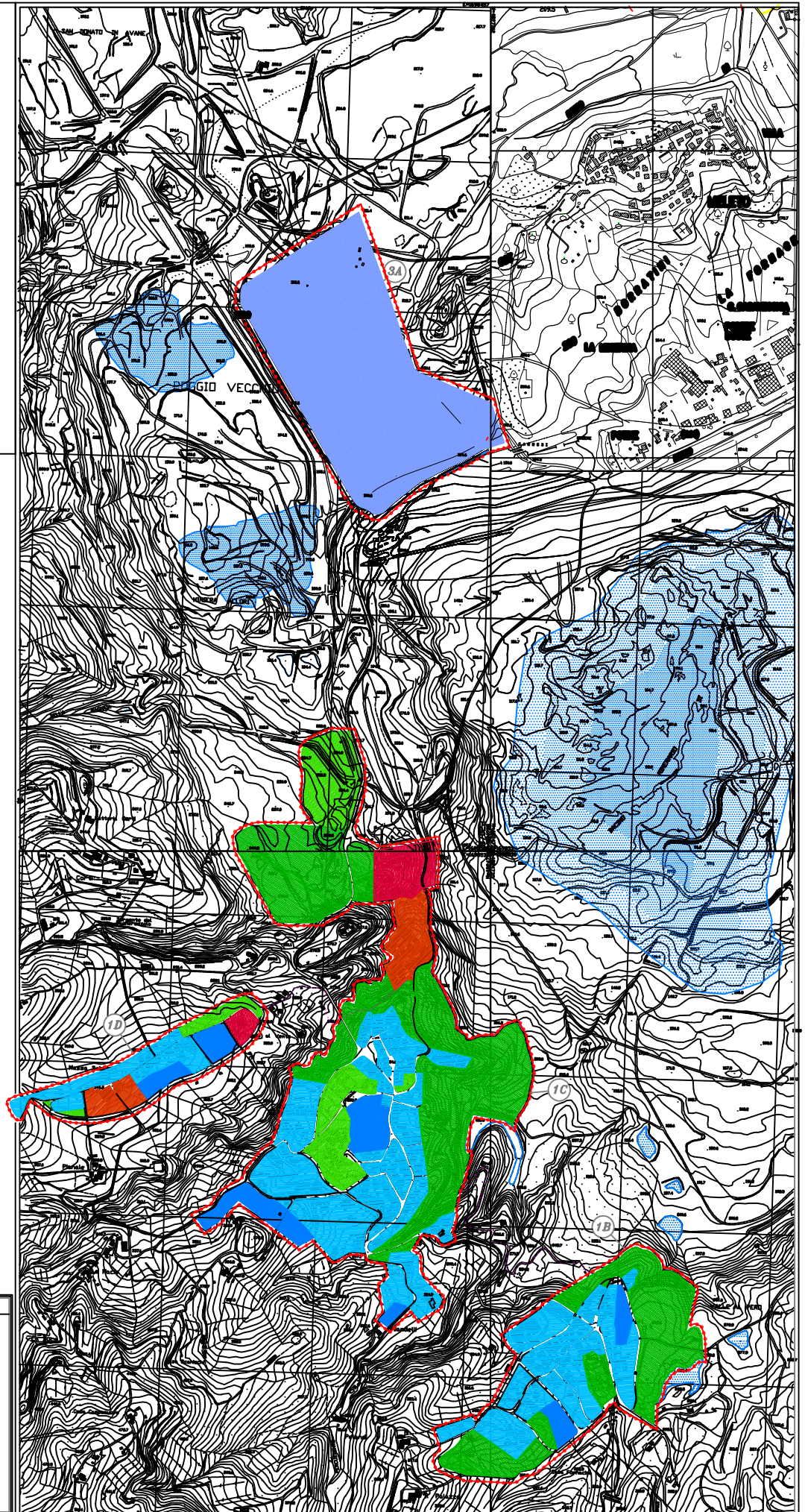
OGGETTO: *Delibera* essere materiale di rappresentazione grafica del governo della S.P.A.R. "Area della Storia" - Zona P.le Produttiva











TAV. S7/2

QUADRO di RIFERIMENTO  
NORMATIVO delle UTOE  
1B) NERI  
1C) CASTELNUOVO del S.aj  
1D) MASSA  
3A) AREA MINIERARIA  
SCALA 1:5000

PROGETTISTI  
ING. ANTONIA PALLI  
ING. PAOLO SPINELLI  
ARCH. ROBERTO VERONESI



LEGENDA

-  AREE PER ATTREZZATURE TURISTICO-RICREATIVE
-  AREE DI VALORE STORICO AMBIENTALE
-  INSEDIAMENTI DI RECENTE FORMAZIONE
-  AREE SOGGETTE A PROCESSI DI TRASFORMAZIONE EDILIZIA
-  NUOVO POLO PRODUTTIVO
-  AREE PER ATTREZZATURE DI INTERESSE PUBBLICO
-  AREE PER I PARCHI ED IL VERDE ATTREZZATO
-  PERIMETRO DELLE UTOE