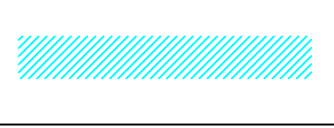
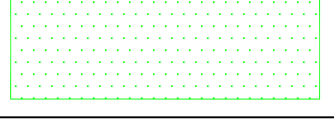
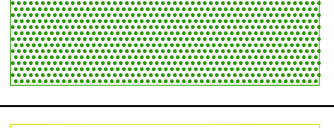

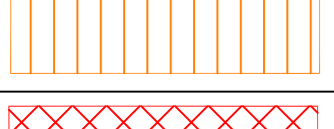
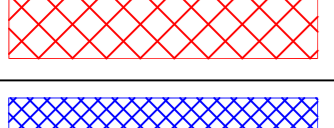
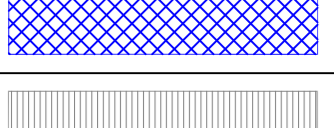
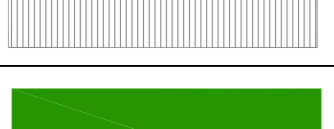

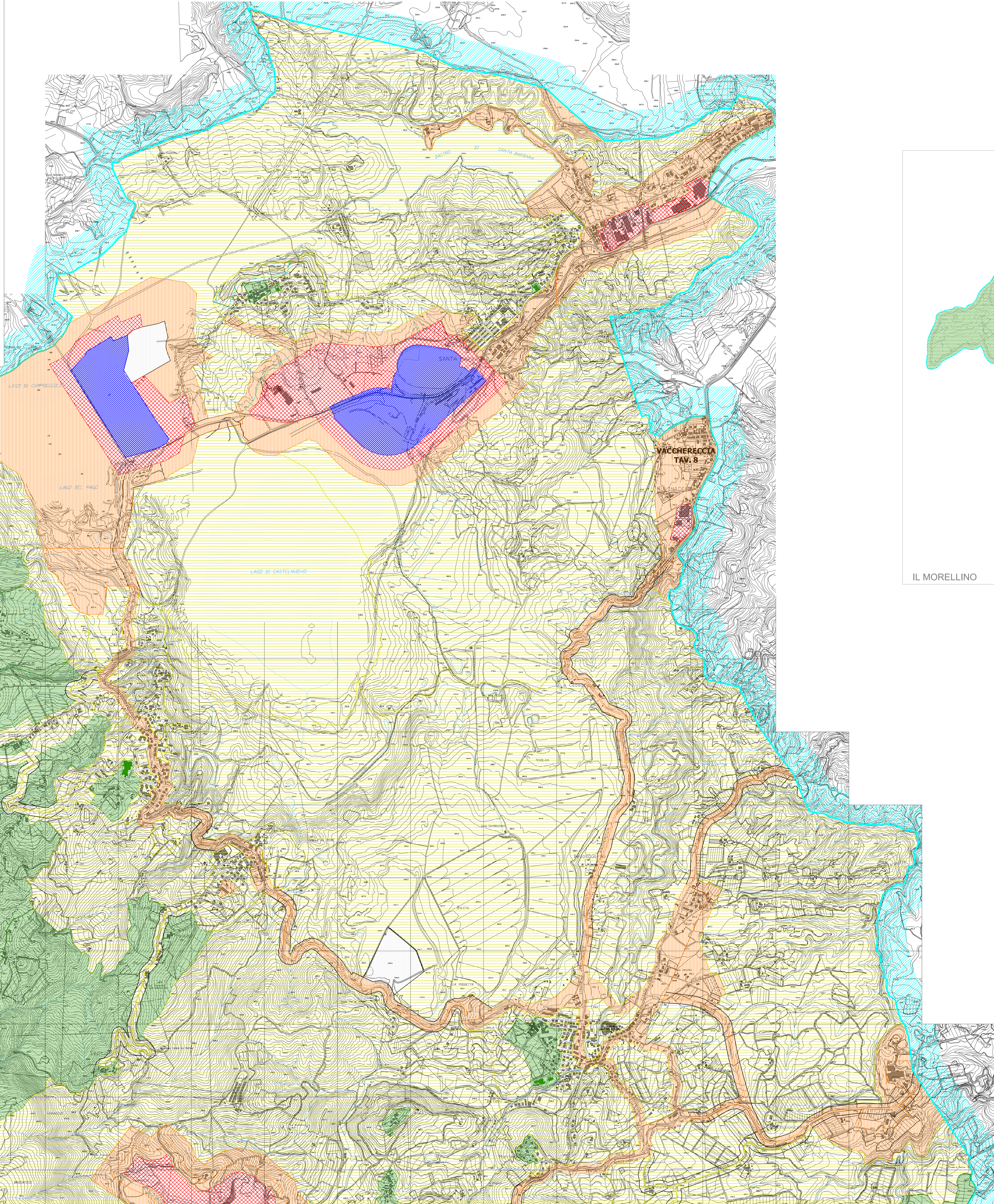
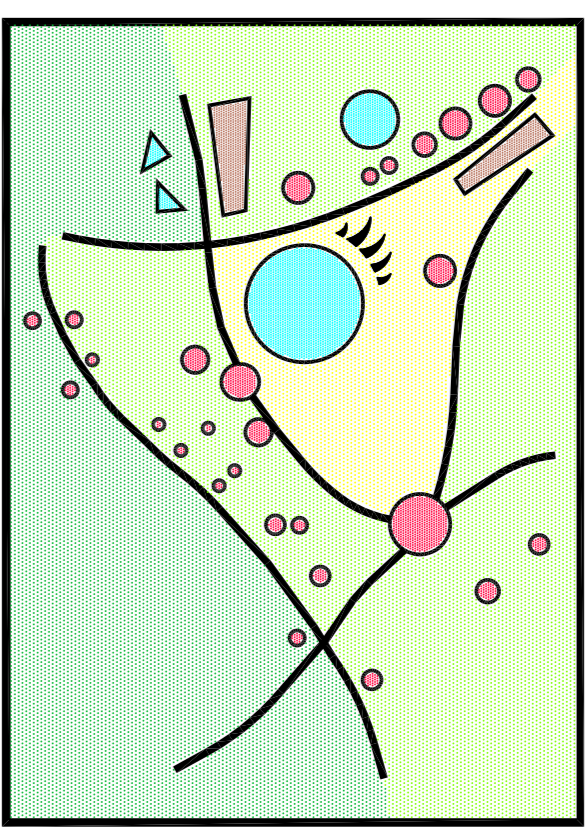
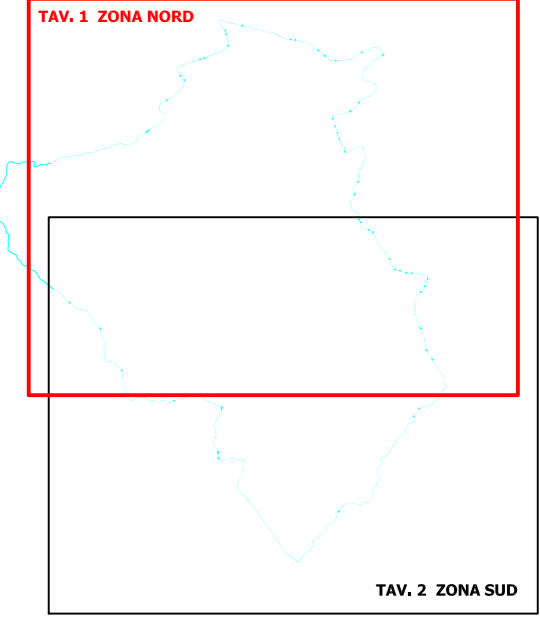


LEGENDA	
	<b>CONFINI COMUNALI</b>
	<b>CLASSE 1</b>
	<b>CLASSE 2</b>
	<b>CLASSE 3</b>
	<b>CLASSE 4</b>
	<b>CLASSE 5</b>
	<b>CLASSE 6</b>
	Area destinata a spettacolo di carattere temporaneo
	Ricettori Sensibili



**COMUNE DI CAVRIGLIA**  
 PROVINCIA DI AREZZO  
**P.C.C.A.**  
 Piano Comunale di Classificazione Acustica  
 Proposta di adeguamento del PCCA per retifica a P.S. e R.U.



UFFICIO URBANISTICA  
 COMUNE DI CAVRIGLIA  
  
 PROGETTISTA:  
 TECNICO COMPETENTE IN ACUSTICA AMBIENTALE:  
 (ai sensi della L.447/95)  
 ING. LUCA TRABALZINI  
  
 RESPONSABILE DEL PROCEDIMENTO:  
 GEOM. PIERO SECCIANI

**TAV. 1**  
**QUADRO D'INSIEME**  
 ZONA NORD  
 SCALA 1:10000